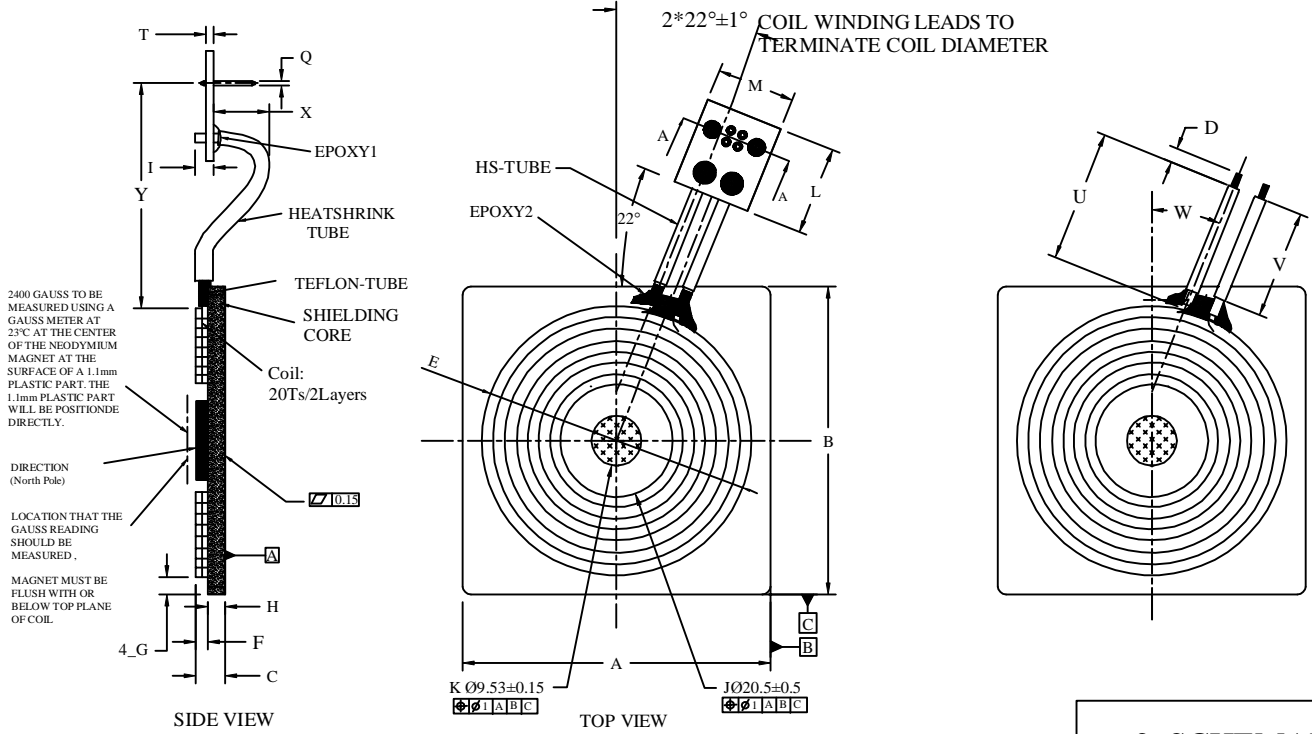


1.ASSEMBLY DRAWING:(Unit mm)



2400 GAUSS TO BE MEASURED USING A GAUSS METER AT 23°C AT THE CENTER OF THE NEODYMIUM MAGNET AT THE SURFACE OF A 1.1mm PLASTIC PART. THE 1.1mm PLASTIC PART WILL BE POSITIONED DIRECTLY.

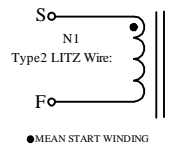
DIRECTION (North Pole)

LOCATION THAT THE GAUSS READING SHOULD BE MEASURED.

MAGNET MUST BE FLUSH WITH OR BELOW TOP PLANE OF COIL.

- A: 50.0±0.5
- B: 50.0±0.5
- C: 4.77±0.3
- D: 2.0±0.5 (Solder wire)
- E: (44)
- F: 2.4±0.2
- G: 2.0 MIN
- H: 2.37±0.2
- I: 2.5 MAX
- J: 20.5±0.5
- K: 9.53±0.15
- L: 18.0±0.3
- M: 16.0±0.3
- N: 9.76±0.15
- P: 6.9±0.15
- Q: 0.79±0.03
- S: 1.57±0.03
- T: 1.2±0.13
- U: 30.5±3.0 (Wire length)
- V: 27±1.0 (Tube length)
- W: 22°±1°
- X: 7.0±2.0
- Y: 29.5±2.0
- Z: 1.0MIN

2. SCHEMATIC:



3.ELECTRICAL CHARACTERISTIC:

- At 25°C
- a.INDUCTANCE @ 100KHz, 1V and @200KHz,1V
L(S-F): 22-24.5 uH
- b.DC RESISTANCE:
DCR(S-F): 100 mohm MAX
- c.ACR @ 100KHz, 1V
210-260mohm
- e.BREAKDOWN VOLTAGE:
500Vdc MIN

5.MATERIAL LIST

| ITEM | DESCRIPTION | SUPPLIER | UL NO. |
|-----------------|-------------------------------------|---------------|---------|
| SHIELDING CORE | V 50mm*50mm*1.57mmT | ANY | N/A |
| EPOXY 1 | V E-220B-H-220 | FONG YONG | N/A |
| TUBE | V TPE 15L CLEAR | GREAT HOLDING | E165236 |
| WIRE | V SHUW-130 | HWAE | E225135 |
| WIRE | AUX LITZ UEW#130 | WEIHAN | E339217 |
| EPOXY 2 | V 2095 | EPOLAB | E346631 |
| PWB | AUX E-220B-H-220 | FONG YONG | N/A |
| MAGNET | V 15*14*1.2, FR4 2 SIDE,with 2 pins | AUTOSPLACE | N/A |
| MAGNET | V 09.525mm*2.3mmT | HUAYA | N/A |
| MAGNET | AUX 09.525mm*2.3mmT | JIADA MAGNETE | N/A |
| HEATSHRINK TUBE | V CHANGBAO 02 | CHANGYUAN | E180908 |
| GLUE | V SALIFT S-901-600 | SALIFT | E209436 |
| VARNISH | V 401 | LOCTITE | N/A |
| VARNISH | V AC-43 | DOLPH | E317429 |
| ALCOHOL | V ALCOHOL 98%(YS-05) | HUNGTAI | N/A |

4. CONSTRUCTIONS: N/A

6.NOTES:

TRANSFORMER



| | | | | | |
|--|------------|-------------|-------------------------|---------------------|---------|
| TOLERANCE (UNLESS OTHERWISE SPECIFIED) | | SCALE: NTS. | DRAWING NO: TR11083001 | CUSTOMER: ANY | REV: -- |
| 0<L<5:±0.1 | ANGLE: ±1° | | PAGE NO: 2 OF 2 | CUSTOMER P/N: ----- | REV: A |
| 5<L<16:±0.3 | | | MANUFACTURER P/N: 80010 | | |