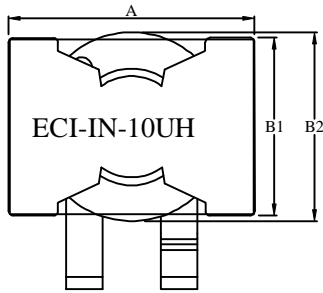
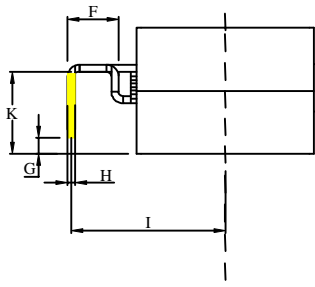


1. ASSEMBLY DRAWING: (Unit: mm)

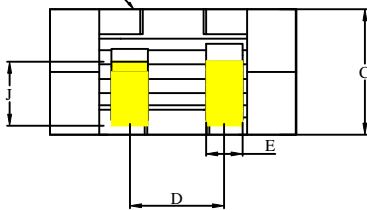


TOP VIEW

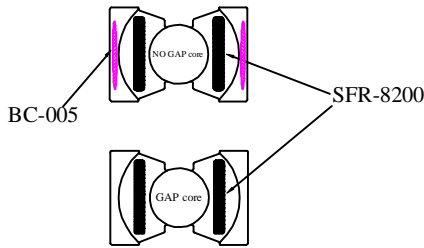


SIDE VIEW

KAPTON TAPE

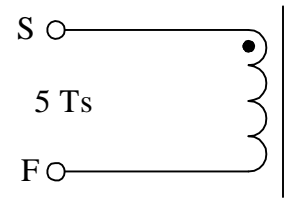


FRONT VIEW



- A= 27.2 MAX
- B1= 19.8 MAX
- B2= 20.9 MAX
- C= 13.8±0.4
- D= 10.4±0.4
- E= 4.0<sup>+0.1</sup><sub>-0.3</sub>
- F= 4.5MIN
- G= 1±0.5
- H= 0.8±0.15
- I= 17.4±0.5
- J= 6.0MIN
- K= 7 to 12.5

2. SCHEMATIC:



3. ELECTRICAL CHARACTERISTIC: At 20°C

- a). INDUCTANCE:  
L(S-F): 10.0uH±10% @100KHz,0.1V
- b). DC RESISTANCE:  
DCR(S-F): 2mohm MAX
- c). HI-POT:  
WDGS TO CORE: 5mA MAX @300Vac 2sec 50Hz

4. CONSTRUCTIONS:

5. MATERIAL LIST

ITEM		DESCRIPTION	SUPPLIER	UL
CORE	V	TP4A PQ2614	TDG	N/A
	AUX	NH2C PA26/14	LIANFENG	N/A
	AUX	MP4B PQ26/14	MAOXIANG	N/A
WIRE	V	(EI-220)	WELL ASCENT	E318511
	AUX	(EI-220)	MITSUBISHI	E104048
	AUX	(1AIW 220)	ZHUHAI SUNTEK	E234867
GLUE	V	ANE-26144-BC-005	INP	N/A
GLUE	V	SFR-8200	FONG YONG	E120665

6. NOTES:

- 1. Operating temperature rang from -40°C to 125°C
- 2. All material can withstand UL94V-1 class F(155°C) requirement.

TRANSFORMER



TOLERANCE (UNLESS OTHERWISE SPECIFIED)		SCALE: NTS.	DRAWING NO: <b>TR11083001</b>	CUSTOMER: <b>ANY</b>	REV: --
0<L<5:±0.1	ANGLE: ±1°		PAGE NO: 2 OF 2	CUSTOMER P/N: -----	
5<L<16:±0.3				MANUFACTURER P/N: 51385	REV: A
16<L<50:±0.5					